

## Breezair Icon® Supercool™ EXS 220

Centrifugal fan evaporative cooler

Now available with Black Opal™ MINI-CELL^ Chillcel™ Pads  
and Wi-Fi Smart App

### Permatuf™ corrosion-proof cabinet

The Breezair cabinet will not corrode or rust. The UV stabilised structural polymer material is the same type used to make acid baths, battery cases and some space satellite components.

### Centrifugal fan

Centrifugal fans are the first choice of air conditioning engineers worldwide. The Breezair forward curved, centrifugal fans are made from injection-molded polypropylene. They are double-width, with aerofoil blades to provide high pressure performance and very low noise levels.



### MagIQcool™ Controller (standard)

Operate one cooler from an easy to use, wall mounted thermostat controller. The controller comes with 20 m wiring loom, that can be extended up to a maximum length of 100 m.



### MagIQtouch™ BMS Control interface (optional)

BMS interface as optional with analogue and digital inputs.



### Advanced touch screen MagIQtouch™ Controller (optional)

The technology includes in-built Installation Wizard, making the operating process simple. Coolers are supplied with a standard 20 m cable (40 m cable can be supplied as optional) to operate up to 60 coolers from a single MagIQtouch™ controller.

**NEW!!**

### Black Opal™ MINI-CELL^ Chillcel™ Pads

Our revolutionary Black Opal Mini-Cell Chillcel pads have transformed the aesthetics of our coolers as they seamlessly blend into their surroundings; maintaining our global leading Mini-cell Chillcel pad technology, which increases surface area of the pads by 25%, dramatically multiplying cooling capacity and efficiency - BEYOND BELIEF!

^Patent pending



### HushPower® direct drive (ECM) motor

Exclusive to Breezair, this motor is super efficient and electronically controlled for optimum efficiency. Corrosion resistant, it's the quietest motor available and has unsurpassed reliability, reduced energy use and runs at variable speeds.



### Non-clogging water distribution system

Breezair's non-clogging water distribution is one of the things that make it unique. The water distributor maximises cooling efficiency by supplying a continuous and balanced flow of water across the cooling pads. This is different to any other brand of evaporative coolers, which are subject to water flow variations for a number of reasons. Breezair's balanced flow ensures highest evaporation efficiency and maximum cooling.



### Tornado® water pump

Designed, manufactured and tested by Seeley International, the Tornado pump epitomises reliability.

### Clean and dry function

The cooler drains automatically when it's not in use, preventing algae growth and maintaining a clean cooler.

### WATERManager™ system

The Breezair WATERManager ensures optimum machine life with minimum maintenance by constantly checking water quality. It senses water quality with a probe that sends a signal back to the electronic module, which then ejects some dirty water and allows fresh water to enter.

**NEW!!**

### MagIQtouch™ Wi-Fi Smart App (optional)

Now you can control your Breezair evaporative cooler remotely using your smart devices.



Syncing with the MagIQtouch wall controller you can:

- View the live status of your unit
- Turn the system on/off or in free-cooling mode
- Adjust temperatures and fan speeds
- Override the Program Modes

### AUTOWeatherseal™



The AUTOWeatherseal closes the cooler air discharge outlet automatically, thus significantly reducing natural air currents from circulating in and out of the building.

### External Air Sensor (Optional)

Displays current outside temperature.

Intuitively optimises water and energy usage based on outside ambient conditions.

Extends the life of your air conditioner by automatically draining the water tank when temperature nears freezing.

# Technical specifications

## EXS 220

Airflow @ 80Pa	Industry standard (m³/h)	9140
Cooling capacity*	(kW)	15.1
Power consumption (total)	Watts max / min	1860 / 70
	Current max (amp)	9.0
Power supply	Voltage / Phases / Hz	220-240 / 1 / 50
Controller	Type	Digital
Fan	Type	Centrifugal
	Dia x width (mm)	460 x 380
Motor	Type	Direct drive inverter
	Speed max (rpm)	680 VAR
	Output Watts max	1500
	Overload & Fuse	Auto reset
	Enclosure	IP2X
Pump	Type	Centrifugal
	Motor	Synchronous
	Rating Watts (input)	25
	Flow rate (L/min)	21
	Voltage / Phases / Hz	230 / 1 / 50
	Overload	Auto reset
	Enclosure rating	IPX4
Cooling pad Chillcel™	Size (mm)	800 x 635 (H) x 120 (4 pads)
	Pad area (m²)	2.03
Water	Tank capacity (L)	11
	Inlet (mm / inches)	12.7 / ½" male BSP
	Drain (mm / inches)	40 / 1½" male BSP
Shipping	Dimensions including pallet (mm)	1160 x 1160 x 955 (H)
	Volume (m³)	1.29
	Mass (kg)	87
	Operating (kg)	94
Connecting duct (raw edged)	Length x width (mm)	550 x 550

\*Cooling capacity measured to Australian Standard AS2913-2000, ambient of 38°C dry bulb and 21°C wet bulb, with room exit temperature of 27.4°C.

### COOLER DISCHARGE AIR TEMPERATURE CHART

		Ambient Relative Humidity %								
		10	20	30	40	50	60	70	80	90
Ambient Dry Bulb Temperature °C	10	2.3	3.3	4.2	5.1	6.0	6.8	7.7	8.5	9.2
	15	5.6	6.9	8.0	9.1	10.2	11.2	12.2	13.2	14.1
	20	8.8	10.3	11.8	13.1	14.4	15.6	16.8	18.0	19.0
	25	11.9	13.8	15.5	17.1	18.6	20.0	21.4	22.6	23.9
	30	14.9	17.2	19.2	21.1	22.8	24.4	26.0	27.4	28.7
	35	17.9	20.5	22.9	25.1	27.1	28.9	30.6	32.1	33.6
	40	20.8	23.9	26.6	29.1	31.3	33.3	35.2	36.9	38.5
	45	23.6	27.2	30.4	33.1	35.6	37.8	39.8	41.7	43.4
	50	26.5	30.6	34.2	37.2	39.9	42.3	44.5	46.5	48.3

This chart represents approximate air temperatures based on cooling performance at sea level. From tests carried out to Australian Standard 2913.

**25 Years**

Corrosion-free  
cabinets  
guarantee

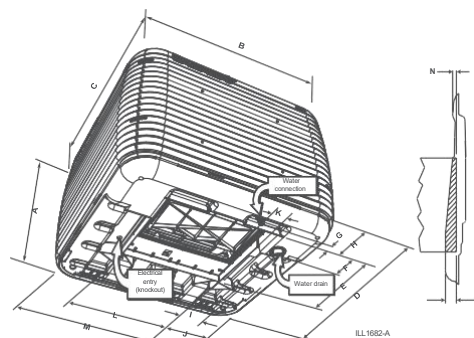
**10 Years**

Structural  
components  
guarantee

**2 Years**

Pump, motor  
& electronic control  
module guarantee

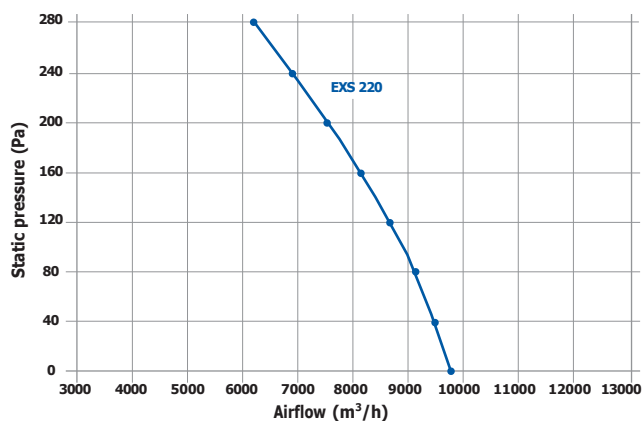
### CABINET DETAILS



Model#	A	B	C	D	E*	F	G	H	I	J	K	L*	M	N	O
EXS 220	860	1160	1160	1108	555	109	38	182	81	274	118	555	834	38	84

Note: All dimensions are in mm. \*Dropper dimensions

### FAN CURVE



Model#	Industry STD Rating m³/h @ 80Pa	Motor W	Certified Air Delivery (m³/h) (static pressure Pa)							
			0	40	80	120	160	200	240	280
EXS 220	9140	1500	9790	9500	9140	8680	8140	7560	6910	6160

**Breezair**  
By SEELEY INTERNATIONAL

[www.climagulf.com](http://www.climagulf.com)

**SEELEY**  
INTERNATIONAL

**CLIMAGULF TRADING COMPANY**

P.O Box 125438, Dubai, UAE

Phone: +971 4 297 3309

Email: [Info@climagulf.com](mailto:Info@climagulf.com)

