

Breezair Supercool™ TBS 580

Axial fan evaporative cooler: unsurpassed reliability, now available with Black Opal™ MINI-CELL^ Chillcel™ Pads and Wi-Fi Smart App

Permatuf™ corrosion-proof cabinet

The Breezair cabinet will not corrode or rust. The UV stabilised structural polymer material is the same type used to make acid baths, battery cases and some space satellite components.

Axial fan

This super powerful fan is designed to maximise performance and minimise noise. The purpose designed fans are inherently balanced, with aerofoil blades to provide energy efficient, high pressure performance.



MagIQcool™ Controller (standard)

Operate one cooler from an easy to use, wall mounted thermostat controller. The controller comes with 20 m wiring loom, that can be extended up to a maximum length of 100 m.



Advanced touch screen MagIQtouch™ Controller (optional)

The technology includes in-built Installation Wizard, making the operating process simple. Coolers are supplied with a standard 20m cable (40m cable can be supplied as optional) to operate up to 60 coolers from a single MagIQtouch controller.

MagIQtouch™ BMS Control interface (optional)

BMS interface as optional with analogue and digital inputs.

NEW!!

Black Opal™ MINI-CELL^ Chillcel™ Pads

Our revolutionary Black Opal Mini-Cell Chillcel pads have transformed the aesthetics of our coolers as they seamlessly blend into their surroundings; maintaining our global leading Mini-cell Chillcel pad technology, which increases surface area of the pads by 25%, dramatically multiplying cooling capacity and efficiency - BEYOND BELIEF!

^Patent pending



NEW!!

MagIQtouch™ Wi-Fi Smart App (optional)

Now you can control your Breezair evaporative cooler remotely using your smart devices.



Syncing with the MagIQtouch wall controller you can:

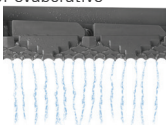
- View the live status of your unit
- Turn the system on/off or in free-cooling mode
- Adjust temperatures and fan speeds
- Override the Program Modes

Totally enclosed motor

Breezair's fan motor is fully enclosed to international standards and excludes any moisture ingress from all sources. The advanced design is rigorously tested and completely reliable.

Non-clogging water distribution system

Breezair's non-clogging water distribution is one of the things that make it unique. The water distributor maximises cooling efficiency by supplying a continuous and balanced flow of water across the cooling pads. This is different to any other brand of evaporative coolers, which are subject to water flow variations for a number of reasons. Breezair's balanced flow ensures highest evaporation efficiency and maximum cooling.



Tornado® water pump

Designed, manufactured and tested by Seeley International, the Tornado pump epitomises reliability.

Clean and dry function

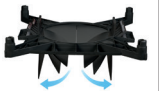
The cooler drains automatically when it's not in use, preventing algae growth and maintaining a clean cooler.

WATERManager™ system

The Breezair WATERManager ensures optimum machine life with minimum maintenance by constantly checking water quality. It senses water quality with a probe that sends a signal back to the electronic module, which then ejects some dirty water and allows fresh water to enter.

AUTOWeatherseal™

The AUTOWeatherseal closes the cooler air discharge outlet automatically, thus significantly reducing natural air currents from circulating in and out of the building.



External Air Sensor (Optional)

Displays current outside temperature. Intuitively optimises water and energy usage based on outside ambient conditions. Extends the life of your air conditioner by automatically draining the water tank when temperature nears freezing.

Technical specifications

TBS 580

| | | |
|-----------------------------|----------------------------------|------------------------------|
| Airflow @ 80Pa | Industry standard (m³/h) | 10010 |
| Cooling capacity* | (kW) | 16.8 |
| Power consumption (total) | Watts max | 1210 |
| | Current max (amp) | 6.0 |
| Power supply | Voltage / Phases / Hz | 220-240 / 1 / 50 |
| Controller | Type | Digital |
| Fan | Type | Axial |
| | Dia (mm) | 541 |
| Motor | Type | PSC |
| | Speed max (rpm) | 1360 VAR |
| | Output Watts max | 950 |
| | Overload & Fuse | Auto reset & 'one-shot' fuse |
| Pump | Enclosure | IP24 |
| | Type | Centrifugal |
| | Motor | Synchronous |
| | Rating Watts (input) | 25 |
| | Flow rate (L/min) | 21 |
| | Voltage / Phases / Hz | 230 / 1 / 50 |
| Cooling pad Chillcel™ | Overload | Auto reset |
| | Enclosure rating | IPX4 |
| | Size (mm) | 850 x 526 (H) x 120 (4 pads) |
| | Pad area (m²) | 1.79 |
| Water | Tank capacity (L) | 23 |
| | Inlet (mm / inches) | 12.7 / ½" male BSP |
| | Drain (mm / inches) | 40 / 1½" male BSP |
| Shipping | Dimensions including pallet (mm) | 1150 x 1150 x 902 (H) |
| | Volume (m³) | 1.19 |
| | Mass (kg) | 68 |
| | Operating (kg) | 91 |
| Connecting duct (raw edged) | Length x width (mm) | 550 x 550 |

*Cooling capacity measured to Australian Standard AS2913-2000, ambient of 38°C dry bulb and 21°C wet bulb, with room exit temperature of 27.4°C.

COOLER DISCHARGE AIR TEMPERATURE CHART

| Ambient Dry Bulb Temperature °C | Ambient Relative Humidity % | | | | | | | | |
|---------------------------------|-----------------------------|------|------|------|------|------|------|------|------|
| | 10 | 20 | 30 | 40 | 50 | 60 | 70 | 80 | 90 |
| 10 | 2.3 | 3.2 | 4.2 | 5.1 | 6.0 | 6.8 | 7.6 | 8.4 | 9.2 |
| 15 | 5.6 | 6.8 | 8.0 | 9.1 | 10.2 | 11.2 | 12.2 | 13.2 | 14.1 |
| 20 | 8.8 | 10.3 | 11.7 | 13.1 | 14.4 | 15.6 | 16.8 | 18.0 | 19.0 |
| 25 | 11.9 | 13.7 | 15.4 | 17.0 | 18.6 | 20.0 | 21.3 | 22.6 | 23.8 |
| 30 | 14.8 | 17.1 | 19.1 | 21.0 | 22.8 | 24.4 | 25.9 | 27.4 | 28.7 |
| 35 | 17.8 | 20.4 | 22.8 | 25.0 | 27.0 | 28.8 | 30.5 | 32.1 | 33.6 |
| 40 | 20.7 | 23.8 | 26.6 | 29.0 | 31.3 | 33.3 | 35.2 | 36.9 | 38.5 |
| 45 | 23.5 | 27.1 | 30.3 | 33.1 | 35.5 | 37.8 | 39.8 | 41.7 | 43.4 |
| 50 | 26.3 | 30.5 | 34.1 | 37.1 | 39.9 | 42.3 | 44.5 | 46.5 | 48.3 |

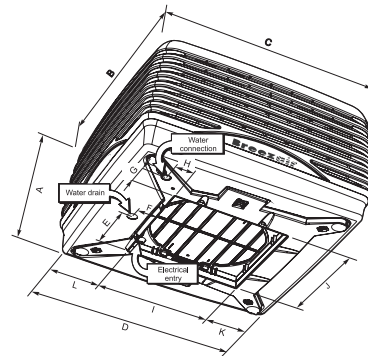
This chart represents approximate air temperatures based on cooling performance at sea level. From tests carried out to Australian Standard 2913.

25 Years
Corrosion-free cabinets guarantee

10 Years
Structural components guarantee

1 Year
Pump, motor & electronic control module guarantee

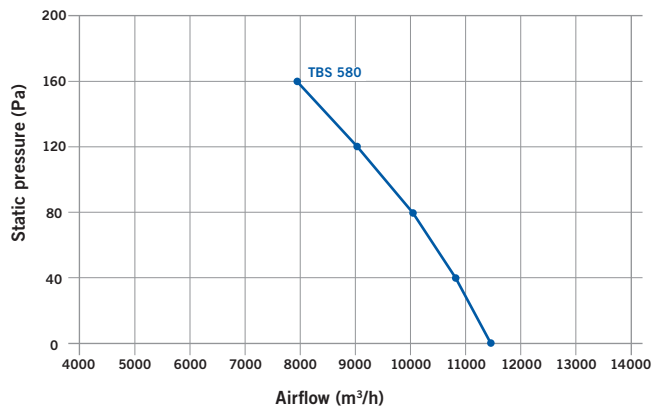
CABINET DETAILS



| Model# | A | B | C | D | E | F | G | H | I* | J* | K | L |
|---------|-----|------|------|------|-----|----|----|----|-----|-----|-----|-----|
| TBS 580 | 835 | 1150 | 1150 | 1080 | 275 | 95 | 82 | 82 | 555 | 555 | 249 | 279 |

Note: All dimensions are in mm. *Dropper dimensions

FAN CURVE



| Model# | Industry STD Rating m³/h @ 80Pa | Motor W | Certified Air Delivery (m³/h) (static pressure Pa) | | | | |
|---------|---------------------------------|---------|--|-------|-------|------|------|
| | | | 0 | 40 | 80 | 120 | 160 |
| TBS 580 | 10010 | 950 | 11410 | 10800 | 10010 | 9070 | 7960 |



info@breezairme.com
sales@breezairme.com

www.seeleyinternational.com

www.breezairme.com



Clima Gulf Trading Company LLC
ENI Churchill Tower, Office 3111
Business Bay, Dubai, UAE
Phone: + 971 4 297 3309
Mobile: +971 52 966 8670

